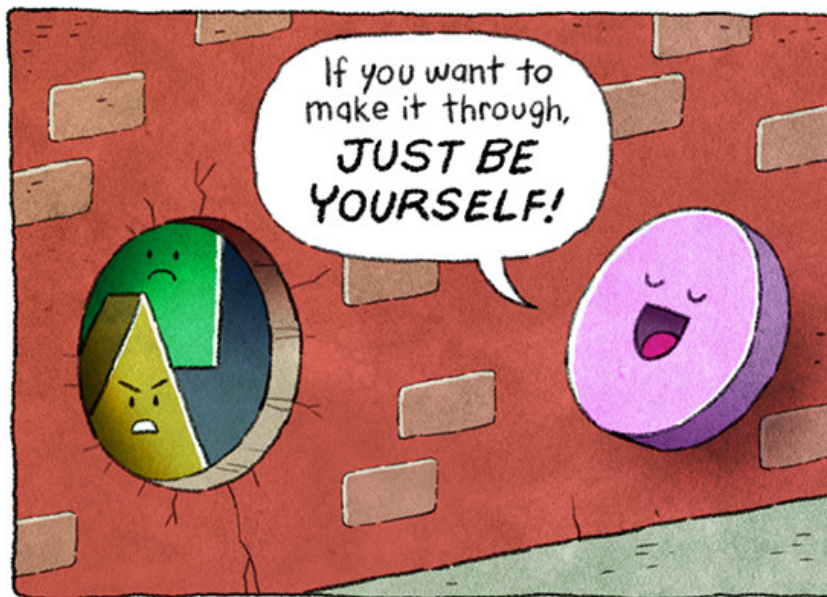
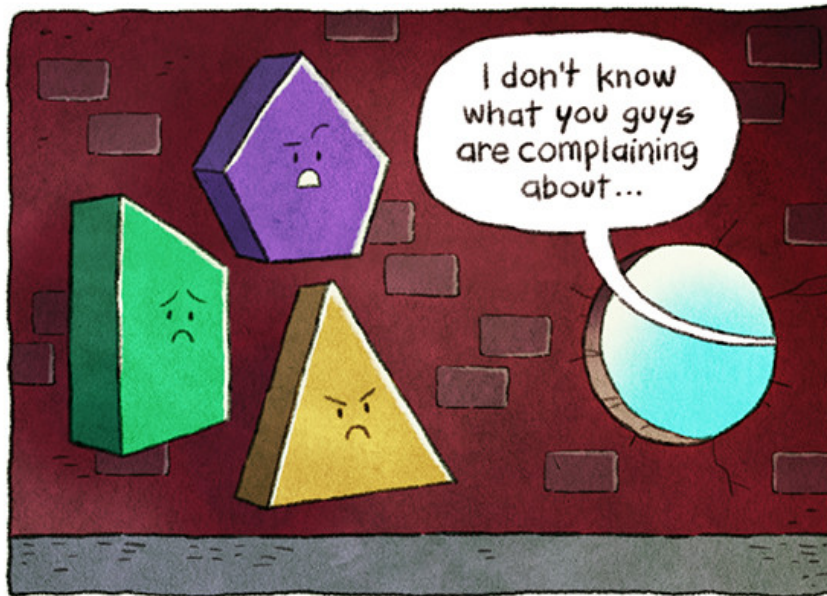




Community Engagement

Elements of Community Engagement

- Bring people in: be inclusive^{1,2}; nurture collaboration²; engage stakeholders, authorities, and local resources (e.g. volunteers)³
- Align the program with the community's vision, values, needs²
- Share control³; listen & learn¹
- Build community capacity²
- Build toward sustainability, working with existing community resources¹
- Conduct research, adapt your approach³



CHARLIEBINK.TUMBLR.COM

What can Community Engagement Look Like in Research?

- Partnerships with community agencies
- Recruiting – individuals, agencies
- Participant/patient engagement in research (e.g. advisory boards, true co-design of interventions)

..... and beyond

Nothing about us

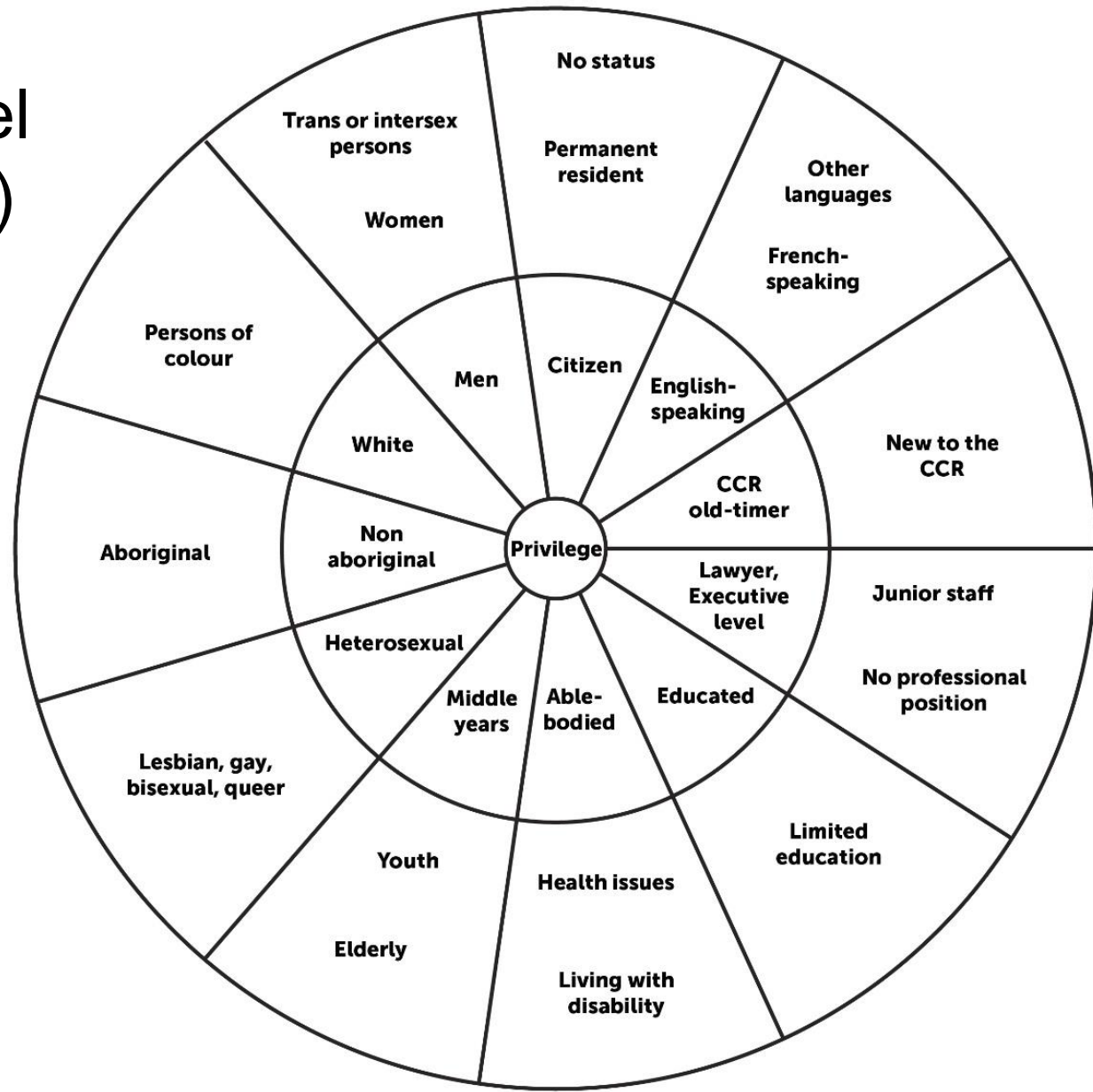
without us

The Power Wheel (Social Location)

Canadian Council of
Refugees⁴

Life is **intersectional**:
everyone is shaped by
the *interaction* of
different social
locations.

Everyday experience is
shaped for many by
multiple oppressions.



Tips to Building Inclusivity⁴

- Keep track of how often you speak
- If speaking on behalf of a group you don't belong to, be aware of the line between *their experience* and *your interpretation* of their experience
- Avoid making assumptions about who is taking part in the discussion – don't assume group members aren't present to speak for themselves
- Don't interrupt or speak over people
- Pay attention to the kind of language you're using.
 - Is it respectful? Is it accessible and easy to understand?

References

1. Hashagen, S. (2002). Models of community engagement. *Scottish Community Development Centre*
2. Miao, T., Umemoto, K., Gonda, D., & Hishinuma, E. (2011). Essential elements for community engagement in evidence-based youth violence prevention. *Am J Community Psychol*, 48: 120-132.
3. Adhikari, B. et al. (2017). Elements of effective community engagement: lessons from a targeted malaria elimination study in Lao PDR (Laos). *Global Health Action*, 10 doi:10.1080/16549716.2017.1366136
4. Canadian Council for Refugees (CCR). (n.d.). *Tips for an Inclusive Consultation*.



Department of Family Medicine
Michael G. DeGroote School of Medicine
Faculty of Health Sciences

fhs.mcmaster.ca/fammed
@McMasterFamMed